



My Home Industries Private Limited



Date: 17.08.2023

To
The Environmental Engineer,
Andhra Pradesh Pollution Control Board,
Regional Office, Door No: 39-33-20/4/1,
Madhavadhara VUDA Colony,
Visakhapatnam - 530 018.

Dear Sir,

Sub: Submission of Environmental statement (Form-V) of My Home Industries Private Limited at Mulakalapalli (Village) for the **Financial Year 2022-2023**-Reg.,

Ref: Consent & Hazardous & Other Waste authorization order No. APPCB/VSP/VSP/165/CFO/HO/2021, Dt: 18.05.2021.

With reference to CFO cited, please find enclosed herewith Environmental Statement **(Form-V)** of My Home Industries Private Limited, Cement Grinding Unit for the **Financial Year 2022-2023** located at Mulakalapalli (Village), Yellamanchili (Mandal), Anakapalli District.

This is for your kind information please.

Thanking you,

Yours faithfully,
For **MY HOME INDUSTRIES PRIVATE LIMITED.**


V.H. Choudary, 13-08-23
Sr. Vice President (Works).



Works: Mulakalapalli (V), Pulaparthi (P), Yelamanchili (M), Anakapalli Dist., Andhra Pradesh, India. Pin 531 055
Ph.: 0891-2867007 | Fax: 0891-2867024 | Email : guv@myhomegroup.in

Regd. & Corp. Office: 9th Floor, Block-3, My Home Hub, Madhapur, Hyderabad - 500 081, Telangana, India. | Ph.: +91-40-6692 9696
Fax: +91-40-2311 8000 | Email: corp@myhomegroup.in | Web: www.mahacement.com | CIN: U26942TG1984PTC004951

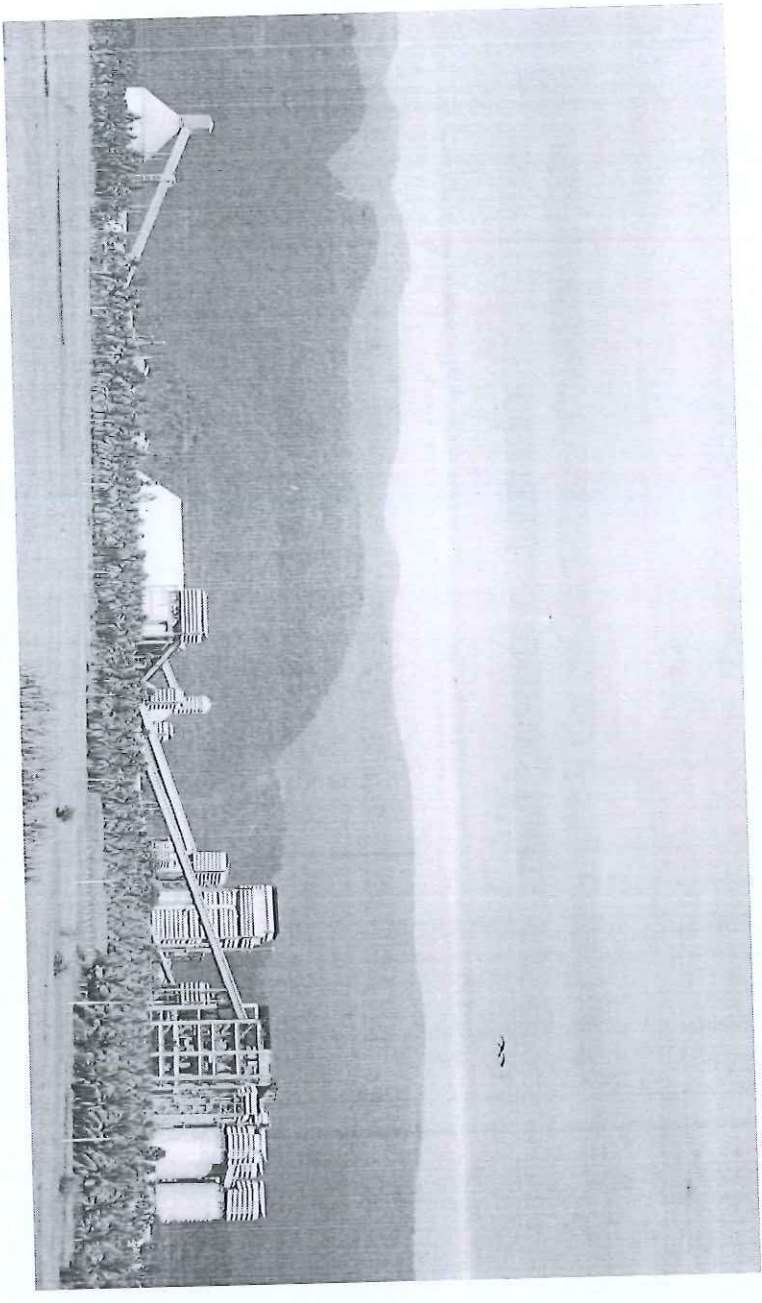


**MY HOME INDUSTRIES PRIVATE LIMITED (PLANT)
CEMENT GRINDING UNIT**

(UNIT - I (1.5 MTPA) and UNIT-II (0.5 MTPA))

ENVIRONMENTAL STATEMENT (FORM-V)

FINANCIAL YEAR 2022 - 23



MY HOME INDUSTRIES PRIVATE LIMITED

(AN ISO 9001:2015, 14001:2015, 50001:2018 & ISO 45001:2018 Certified Company)
Mulakalapalli Village, Elamanchili Mandal,
Anakapalli Dist., Andhra Pradesh - 531055.

ENVIRONMENTAL STATEMENT FORM - V
(See Rule 14)

Environmental Statement for the financial year ending on 31st March
on or before 30th of September every year.

PART - A

1. Name and address of the owner / occupier of the industry operation or process :
Sri C.S. Pandey (Director - Operations)
My Home Industries Private Limited
 (plant)
 (Cement Grinding Unit - I & II)
 Mulakalapalli (V), Elamanchili (M),
 Anakapalli Dist. PIN: 531055.

2. Industry category : Red

3. Production capacity – Units :

Portland slag cement (PSC)	Unit-I: 1.5MTPA
Portland Pozzolona Cement (PPC)	
Ground Slag (GGBS)	
Ordinary Portland cement(OPC)	Unit-II: 0.5MTPA
Composite cement	

4. Year of establishment : Unit-I: 2008 & Unit-II: 2012

5. Date of last environmental statement Form V report submitted. : 22nd July, 2022

PART - B

WATER AND RAW MATERIAL CONSUMPTION

1. Water consumption (M³/day) (Peak)

	UNIT - I & II
Process / Cooling (M ³ /day)	169.58
Domestic (M ³ /day)	11.71

Name of the products	Process water consumption per unit of products (KL/MT)	
	During the previous financial year (2021-2022)	During the current financial year (2022-2023)
Cement	0.034	0.027

2. Raw material consumption

UNIT-I Raw Material Specific Consumption (MT/MT of Product)

Name of raw materials (UNIT-I)	Name of products (UNIT-I)	Consumption of raw material per unit of output (MT)	
		During the previous financial year	During the current financial year
		(2021-2022)	(2022-2023)
Clinker	PSC	0.364	0.359
Slag		0.617	0.613
Gypsum		0.019	0.027
Clinker	OPC	0.940	0.902
Gypsum		0.047	0.050
Fly ash		0.013	0.048
Slag	CC	0.380	0.370
Clinker		0.352	0.350
Gypsum		0.045	0.047
Fly ash		0.221	0.221

UNIT-II Raw Material Specific Consumption (MT/MT of Product)

Name of raw materials (UNIT-II)	Name of products (UNIT-II)	Consumption of raw material per unit of output (MT)	
		During the previous financial year	During the current financial year
		(2021-2022)	(2022-2023)
Clinker	PSC	---	---
Slag		---	---
Gypsum		---	---
Clinker	OPC	0.903	0.902
Gypsum		0.048	0.05
Fly ash		0.049	0.048
Slag	CC	---	---
Clinker		---	---
Gypsum		---	---
Fly ash		---	---

PART - C
POLLUTION DISCHARGED TO ENVIRONMENT
 (Parameter as specified in the consent issued)

Pollutants	Quantity of pollutants discharged in (2021-2022)	Concentrations of pollutants in discharges (2021-2022)	Percentage of variation from prescribed standards with reasons
Dry process is adopted for cement manufacturing. There is no process wastewater generation. Domestic wastewater is being treated through Sewage Treatment Plant.			
a) Water			
b) Air (Stacks)	Pollutants	Kg/Day	mg/Nm³
			%
Vertical Roller mill bag house UNIT-I	PM	43.45	6.90
Ball mill bag house UNIT-II	PM	20.26	14.39
			-52.02

PART - D
HAZARDOUS WASTES

(As specified under Hazardous and Other Wastes (Management and Transboundary Movement) Rules, 2016)

Hazardous waste UNIT- I & II	Total quantity (Kg)	
	During the previous financial year (2021-2022)	During the current financial year (2022-2023)
From process	Nil	Nil
*Waste oil	1800 lts	210 lts
*Waste grease	600 Kg	1280 Kg
**From pollution control facilities	Nil	Nil

* Hazardous waste sent to authorized recyclers/co-processor/pre-processor.

** Collection from pollution control facilities are reusing in process

PART - E

SOLID WASTE

Solid waste	Total quantity (Kg)	
	During the previous financial year (2021-2022)	During the current financial year (2022-2023)
A. From process	Nil	Nil
B. From pollution control facilities	Nil	Nil
C. 1. Quantity recycled or re-utilized within the unit.	Nil	Nil
2. Sold	Nil	Nil
3. Disposed	Nil	Nil

PART - F

Please specify the characterization (in terms of composition and quantum) of hazardous as well as solid wastes and indicate disposal practice adopted for both these categories of wastes.

There is no generation of solid waste from the process. Hazardous waste (waste oil & waste grease) is reused within the premises/ disposed to authorized agency through APFEMC.

PART - G

Impact of the pollution abatement measures taken on conservation of natural resources and on the cost of production.

1,85,919 MT of flyash generated from thermal power plants utilized for cement manufacturing; 6282 MWh solar power generated & utilized and 18,053 m3 STP treated wastewater utilized for greenbelt watering during FY 2022-23.

PART - H

Additional measures/ investment proposal for environmental protection abatement of pollution, prevention of pollution.

MHPL incurred an expenditure of about **Rs. 6.21 Cores** on environmental monitoring activities, greenbelt development & maintenance, operation & maintenance of STP, maintenance of air pollution control equipment, during the **F.Y 2022-2023.**

PART - I

Any other particulars for improving the quality of the environment.

- 282 Nos. of plants were planted in the year 2022-2023 within the plant premises.
- Under CSR, spent an amount of **Rs.1,59,907/-** (Rupees One Lakh Fifty Nine Thousand Nine Hundred and Seven only) spent in **F.Y 2022-2023.**